



Trade union workshop

Climate change and the Sustainable Development Goals

***ETUC Sustainable Growth & Decent Work Index
(#EU_SDG8i)***

Giovanni Casale





- 25/09/2015 – UN General Assembly – “Transforming our World: The 2030 Agenda for Sustainable Development”
- Key Components of the 2030 Agenda
 - a Declaration,
 - 17 Sustainable Development Goals (SDGs),
 - a set of 169 Targets linked to each goal,
 - set of Indicators linked to each Target to measure progress in implementation

DECLARATION

“...achieving sustainable development in its three dimensions – economic, social and environmental – in a balanced and integrated manner”.

PLEDGE

“...no one will be left behind”

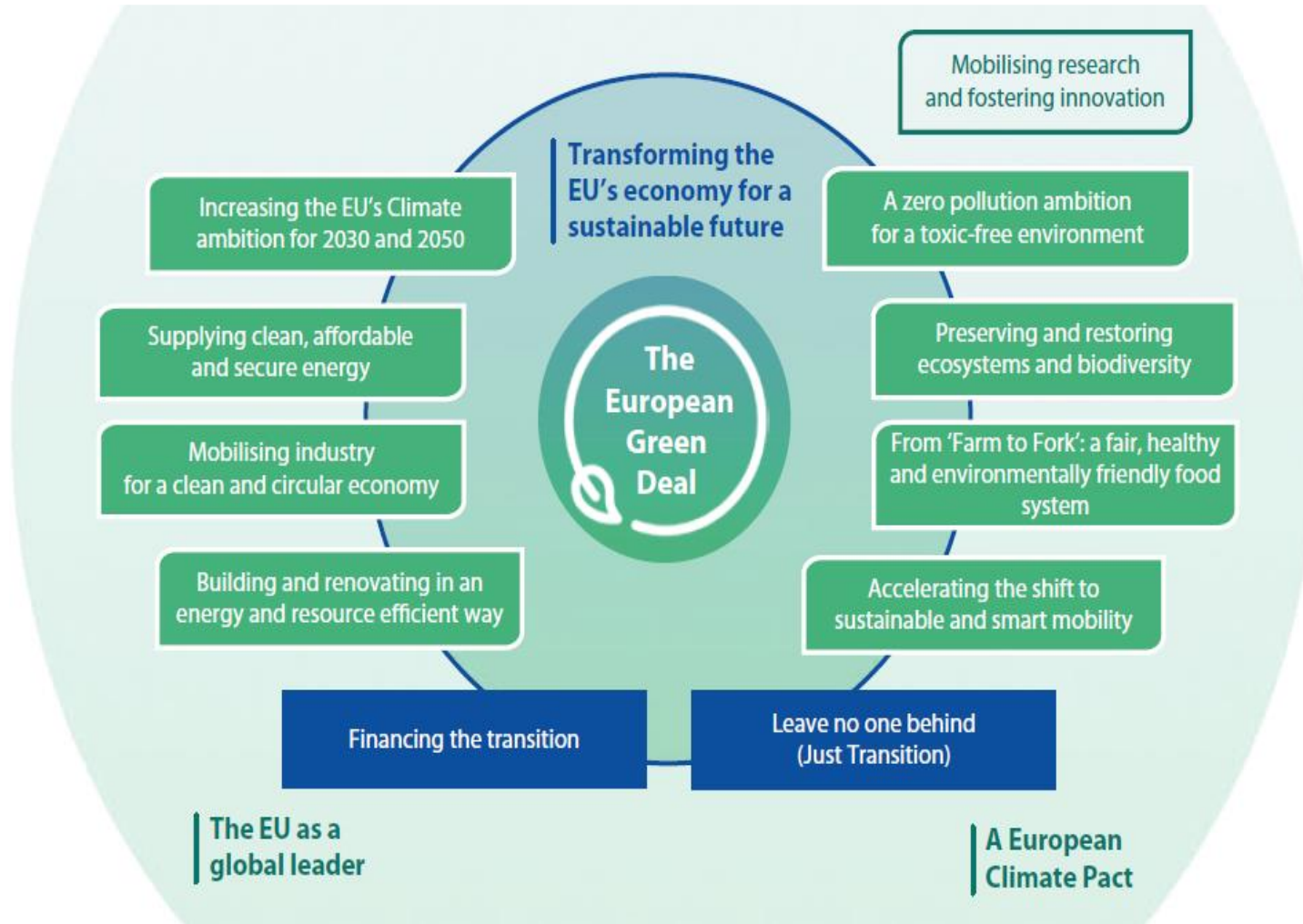
VISION

*“We envisage a world **free of poverty, hunger, disease and want**, where all life can thrive [...] a world **free of fear and violence**; [...] a world of **universal respect for human rights and human dignity, the rule of law, justice, equality and nondiscrimination**; [...] a world in which every country enjoys **sustained, inclusive and sustainable economic growth and decent work for all**.*

The 17 SDGs



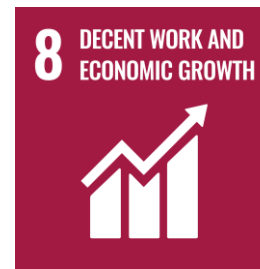
EU Climate action



REPowerEU



The pivotal role of SGD 8



ILO

“Goal 8 is probably the most critical goal for trade unions. The Goal seeks to promote sustained, inclusive and sustainable economic growth coupled with full and productive employment and decent work for all.”

***Decent work** must be placed at the heart of macroeconomic policies of countries.*

Decent Work strategic objectives:

- the pursuit of full employment
- to ensure rights at work
- social protection
- social dialogue

Principle of **centrality of Goal 8** (*Promote sustained, inclusive and sustainable economic growth, full and productive employment and decent work for all*).

- Positive spill-over effects on other SDGs
- Efficient and inclusive way to manage transitions
- Speed up innovative solutions

UN 2030 Agenda interconnected with the European Pillar of Social Rights (**EPSR**). Framework policies for the EU

SDG 8 is key to address the social and economic impacts of the **Covid-19 crisis and the Russian war in Ukraine**. Through its targets on workers protection, decent work, social protection and on inclusive growth, Goal 8 drives the 2030 Agenda forward and plays a fundamental role in trade unions' call for a New Social Contract between governments, business and workers.

Social area

Antipoverty plans;
Social transfers;
Gender sensitive policies



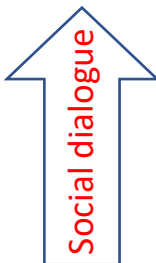
Increasing lower incomes;
Nondiscrimination/equal opportunities;
Progressive taxation;
Economic democracy



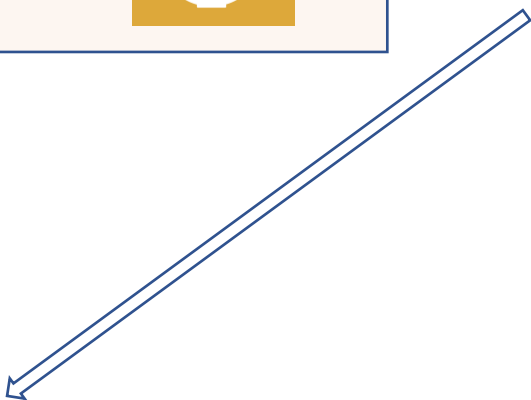
Improving working conditions;
Women in top positions



Stronger democratic Institutions;
Double EU budget + own resources;
Social dialogue and
Multilateralism; Rule of law



Growth (inclusive and sustainable); Decouple economic growth from environmental degradation; Employment – Quality jobs (skills, gender gaps, H&S, precariousness, social protection, etc.); SME and access to finance



End of epidemics diseases; prevention services; Achieve universal health coverage; quality essential healthcare services and affordable essential medicines and vaccines for all; Societal Wellbeing



National energy and climate plans, climate related hazards/risks, education; green taxation



Investment area



Public water – preserving mountains, forests, wetlands, rivers, lakes – fighting pollution



Green energy – energy efficiency - infrastructures



R&D - Freight transport – Industry/manufacturing – CO² emission reduction



Housing – Transport – cultural and natural heritage – disaster prevention – technologies for public services



Efficiency natural resources – waste treatment – sustainable tourism – circular economy



Education, training, skills (reskill and upskill) – Education infrastructures



Rural areas – agriculture – sustainable fishing

The ETUC EU_SDG8 index

Sustainable Growth & Decent Work Index” (#EU_SDG8i)

- assesses the implementation of Goal 8 in Europe
- uses SDG 8 indicators + other indicators (reinforcing connection decent work <-> sustainability)
- contributes to policy proposals at European and national level,
- orientates policy decisions for a quick progress toward all SDGs.

It is a **synthetic indicator**, useful to monitor social progress in Europe, that assess, ranks and benchmarks the Member States’ performance according to three composite indicators:

- economic wellbeing of people;
- quality of labour institutions;
- vulnerability of workers.

These indicators are also correlated to other SDG targets, as well as to key policy areas such as digitalisation (DESI - Digital Economy and Society Index), and the Green Deal indicators.

ETUC partnered with ASviS (*Italian Alliance for Sustainable Development*) to develop an EU-specific approach to the monitoring of SDG8.



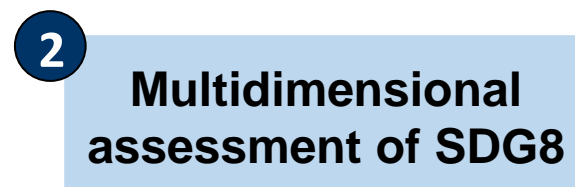
A synthetic index...

...to measure the potential for social and economic sustainability of a country, and to analyse correlations with indicators of digitalisation and climate/environment protection...



Selection criteria:

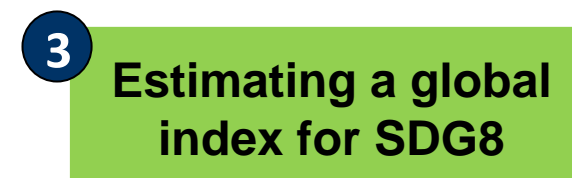
- Theoretical relevance
- EU27 coverage
- Data availability over time (last 12 years)
- 24 indicators (also TUs)



Three sub-domains

within the #EU_SDG8i:

- Economic well-being
- Employment Quality
- Labour vulnerability



A synthetic index to:

- Evaluate the country's performance with respect to SDG8
- Measure differences among countries
- Monitor changes over time



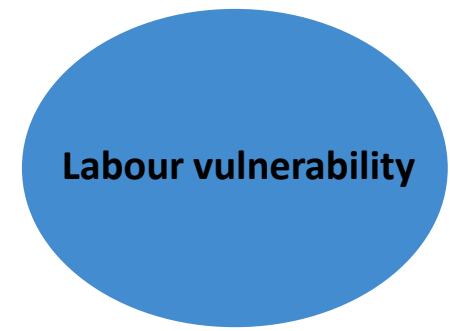
Tertiary educational attainment	% of population aged 30 to 34	+
Proportion of small-scale industries in total industry	%	+
Real GDP growth rate	% change on previous period	+
GNI per capita, PPP	current international \$	+
People at risk of income poverty after social transfers	%	-
Income share of the bottom 40 % of the population	% of income	+
In-work at-risk-of-poverty rate	% of people aged 18 and over	-
Positions held by women as board members	% of positions	+



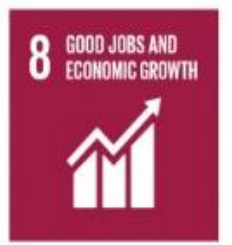
Employment rate	% of population aged 20 to 64	+
Collective bargain coverage	%	+
Annual growth rate of output per worker	% of GDP	+
Gender employment gap	Percentage points	-
Long-term unemployment rate	% of active population	-
Labour market slack	%	-
Employment rates of recent graduates	% of population aged 20 to 34	+



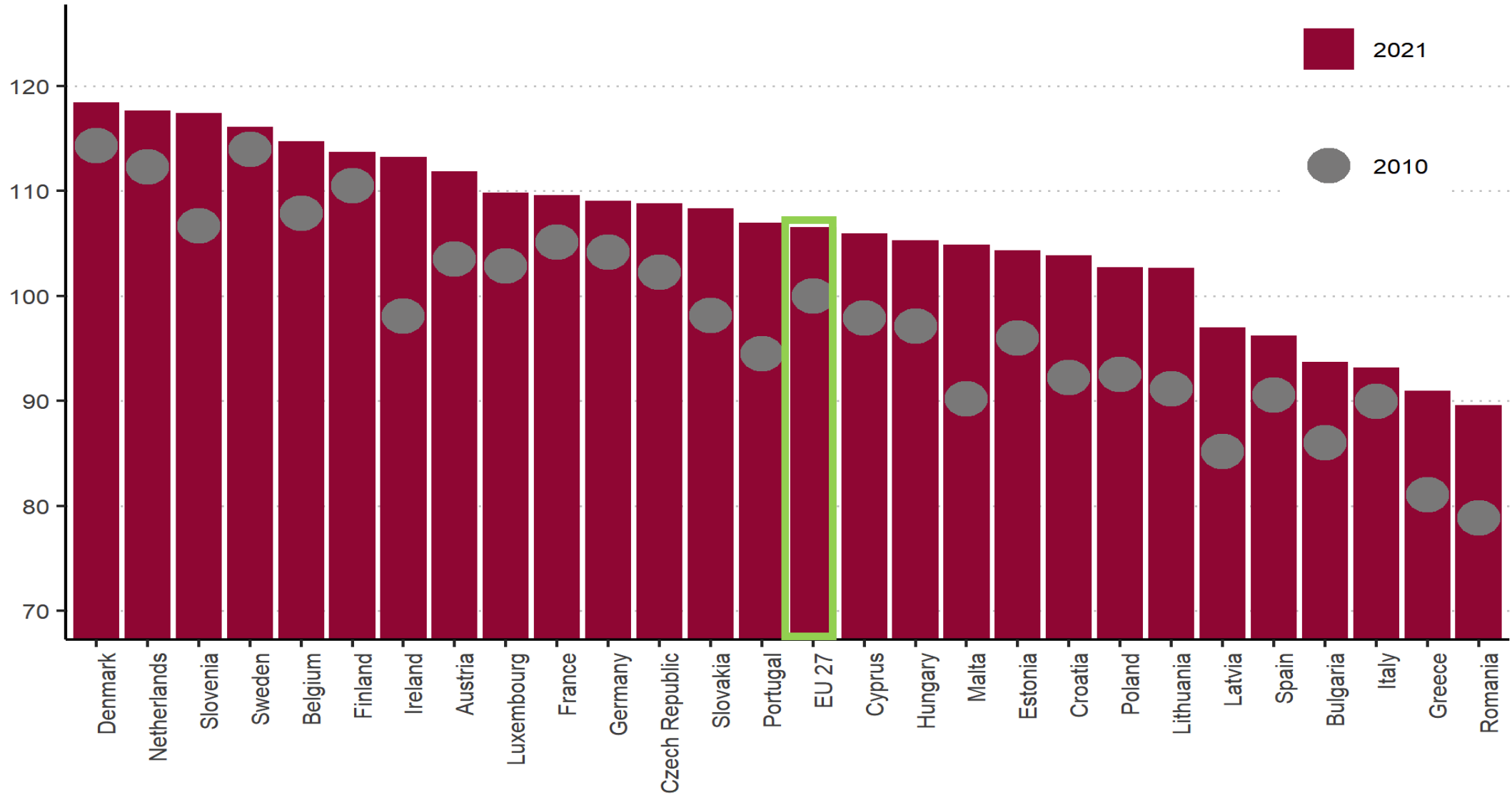
People killed in accidents at work	number per 100 000 employees	-
People 65-w at risk of poverty or social exclusion	% of people 65 and over	-
Neet	% population aged 15-29	-
Involuntary part-time employment	% of the total part-time	-
Vulnerable employment (modeled ILO estimate)	% of total employment	-
Percentage of temporary contracts for people aged 20-64 years old	% of total employment	-
Gender pay gap in unadjusted form	% of average gross hourly earnings	-
Female/male ratio of inactive population due to caring responsibilities	f/m ratio of inactive population aged 20 to 64	-
Adult participation in learning	% of population aged 25 to 64	+



Composite Index



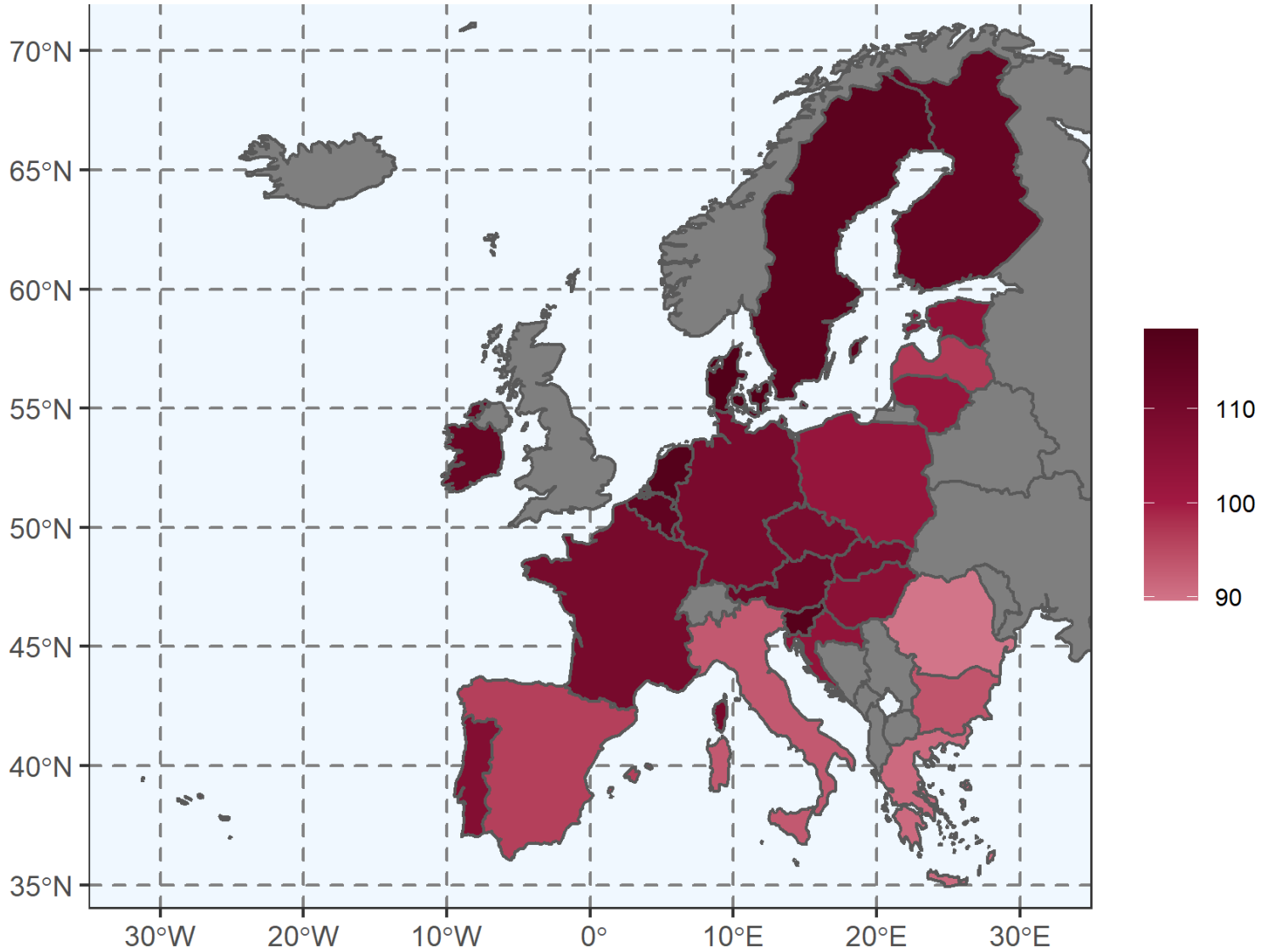
#EU_SDG8 INDEX – GLOBAL (2010-2021)



#EU_SDG8 INDEX – GLOBAL (2010-2021) – by country



#EU_SDG8 INDEX – GLOBAL (2010-2021)

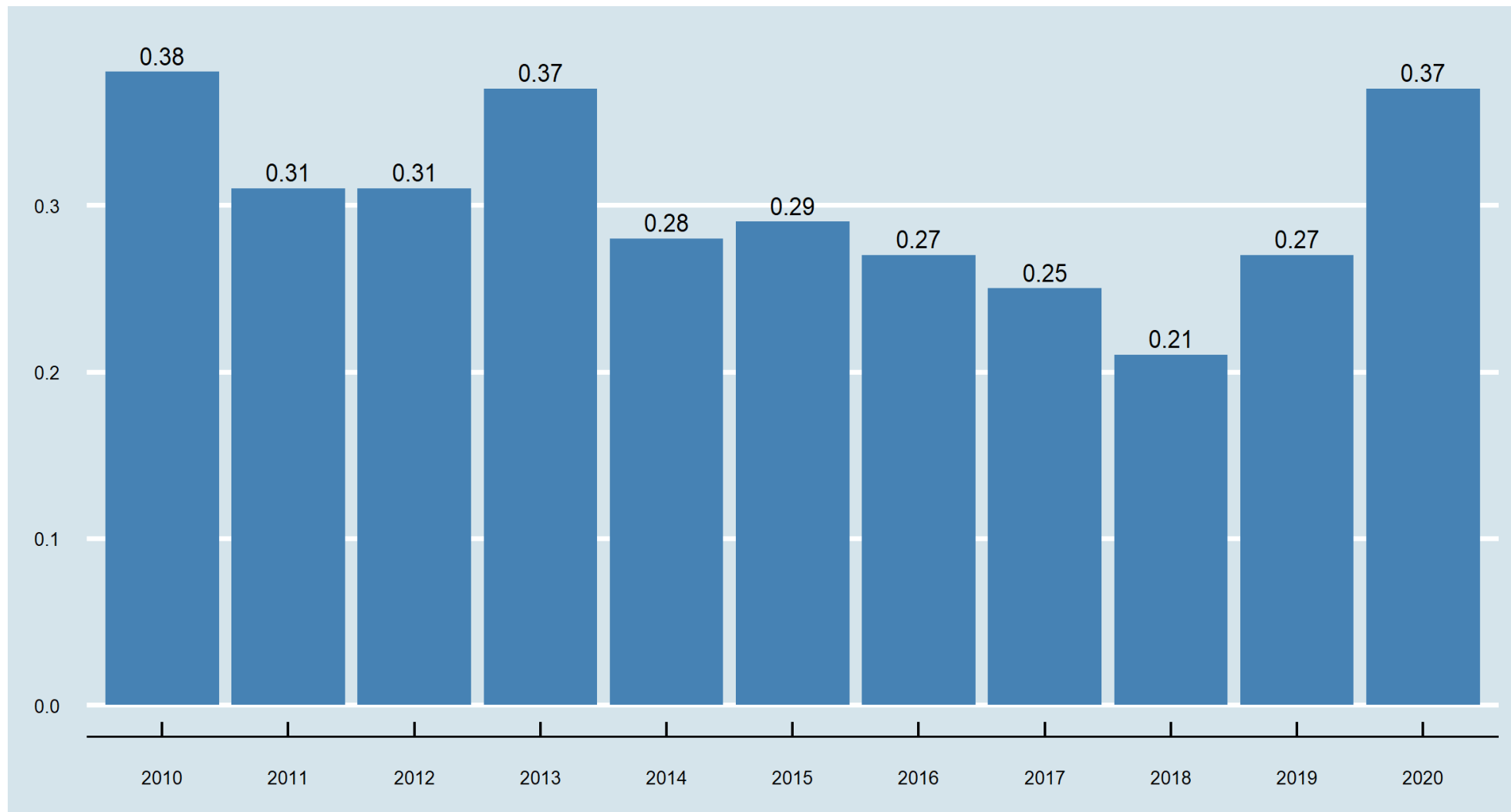


[CLICK HERE for the interactive page of the ETUC #EU_SDG8i](#)



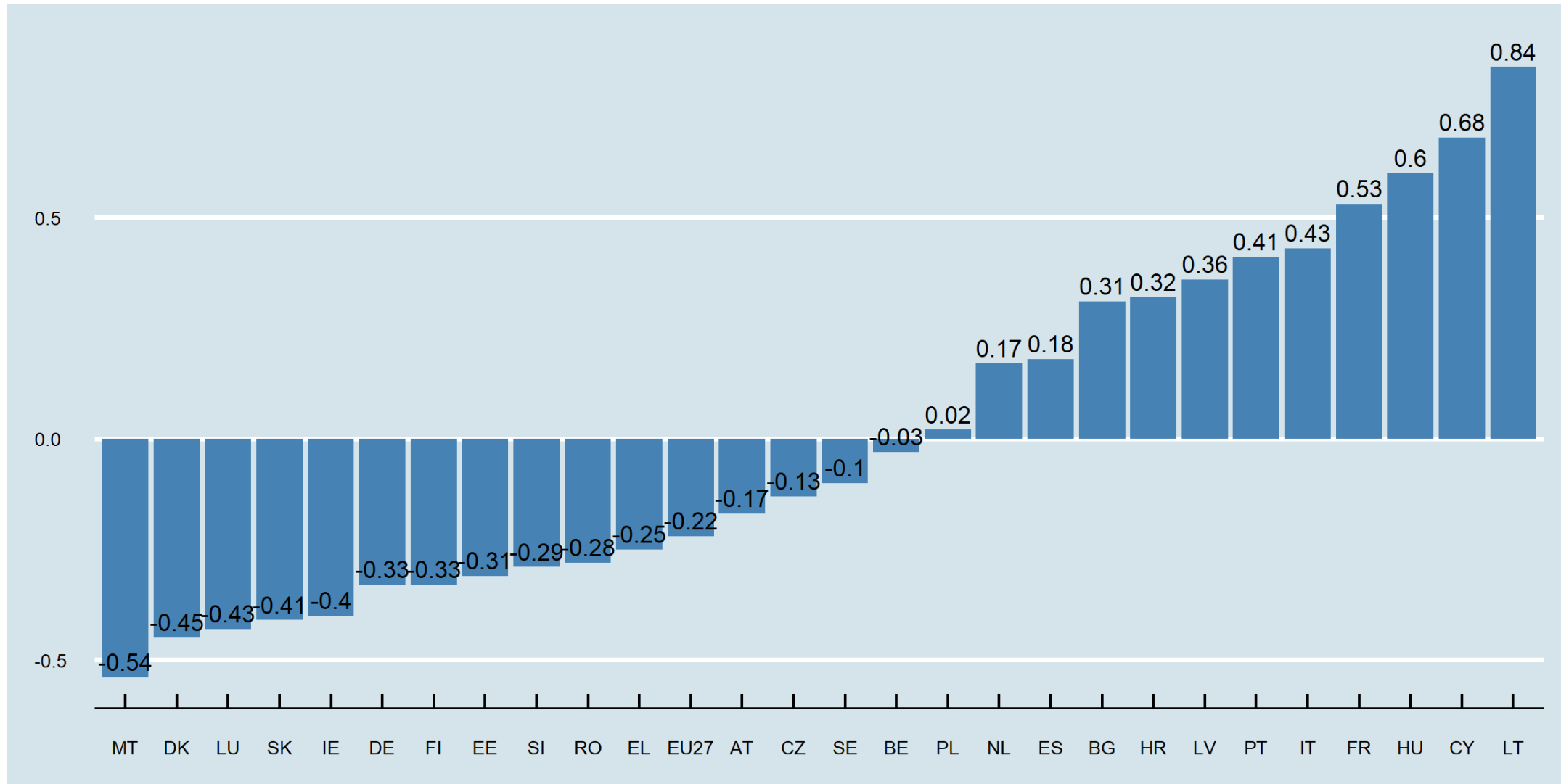
CORRELATION BTW GHG EMISSIONS AND #EU_SDG8i (time)

Linear model estimating the effect of greenhouse gas emissions per capita on #EU_SDG8i



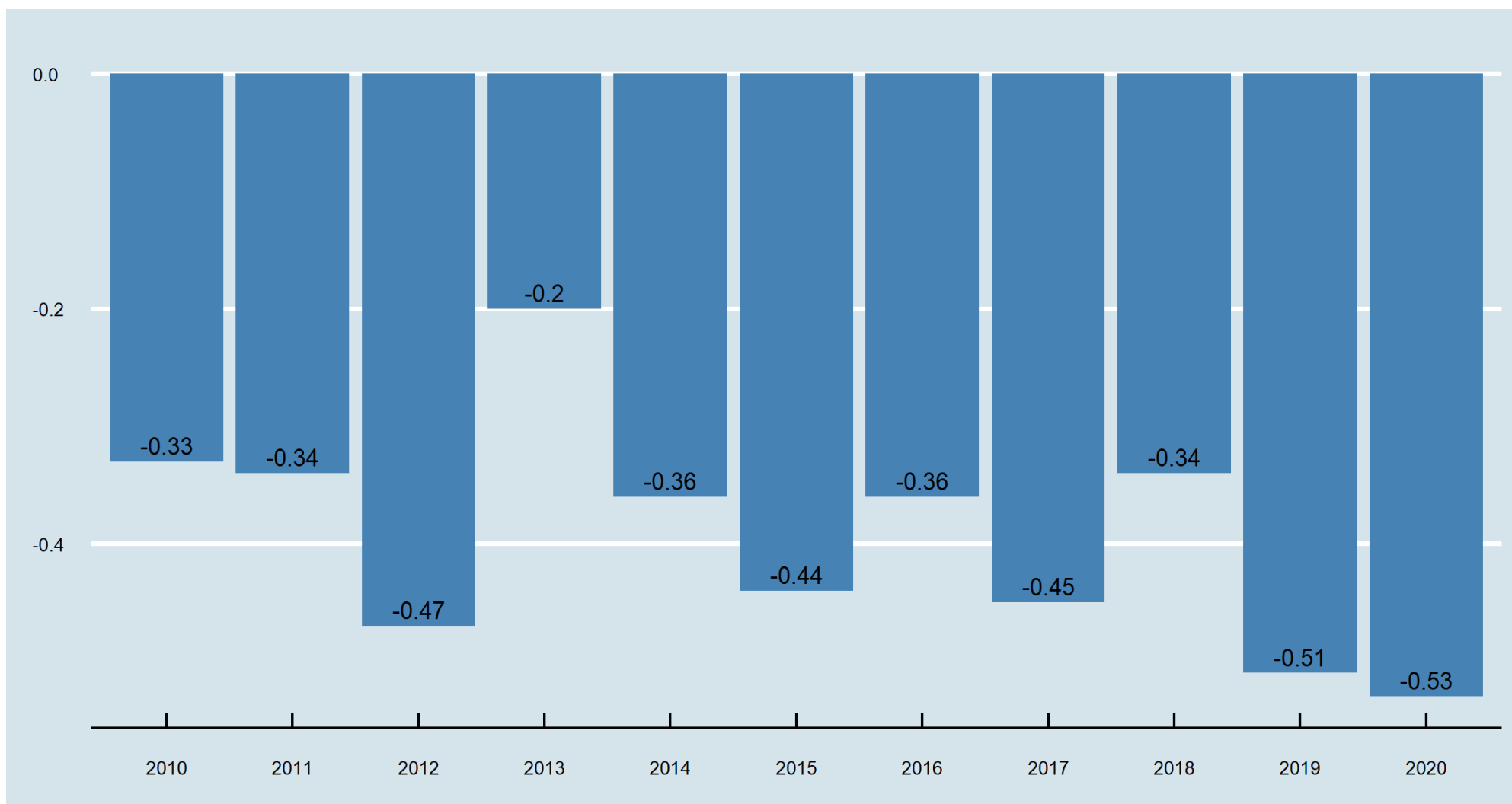
CORRELATION BTW GHG EMISSIONS AND #EU_SDG8 (country)

Correlation between #EU_SDG8i and greenhouse gas emissions per capita. Years 2010 - 2020



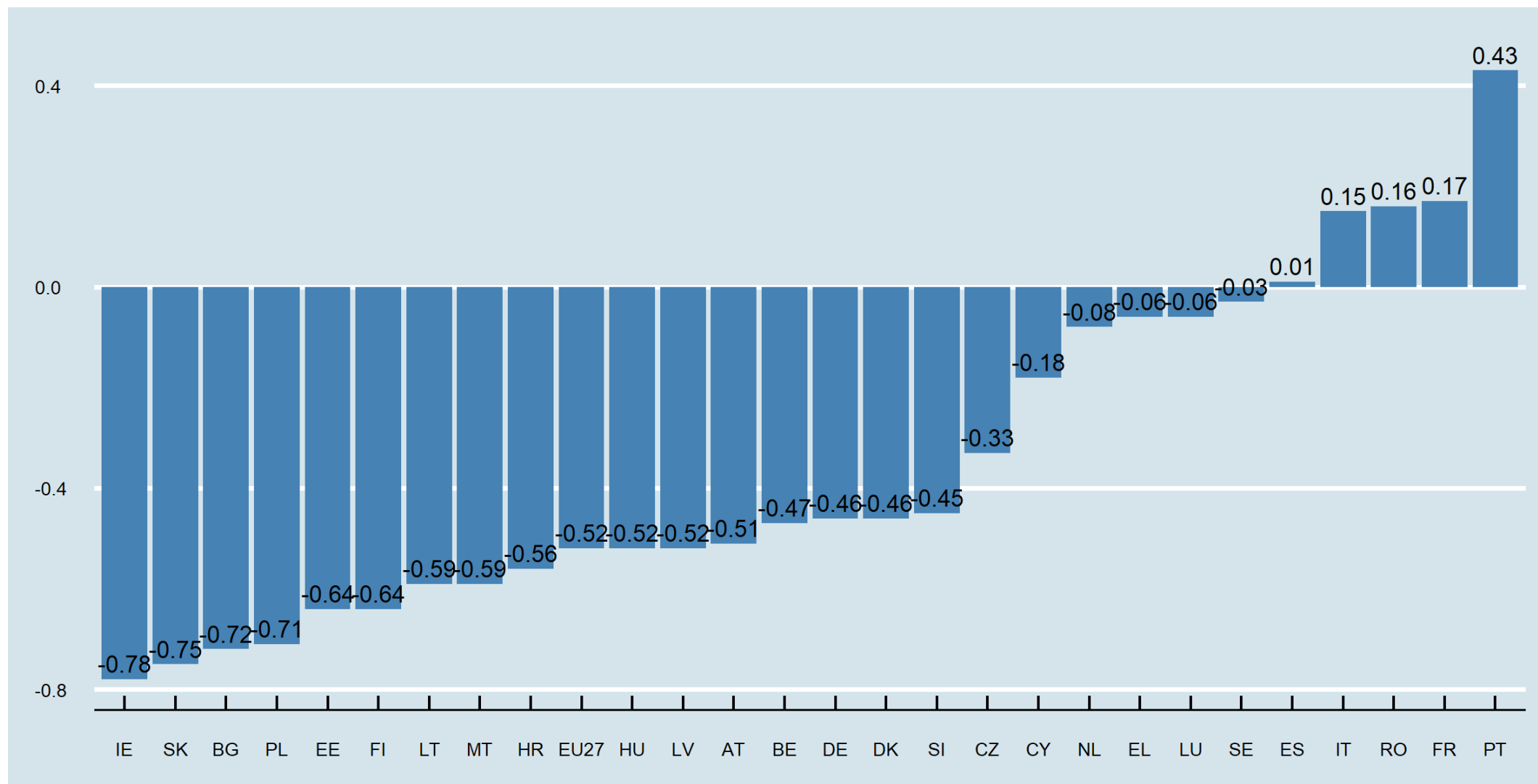
Urban population exposure to air pollution by PM2.5

Correlation between #EU_SDG8i and urban population exposure to air pollution by PM2.5. Years 2010 - 2020



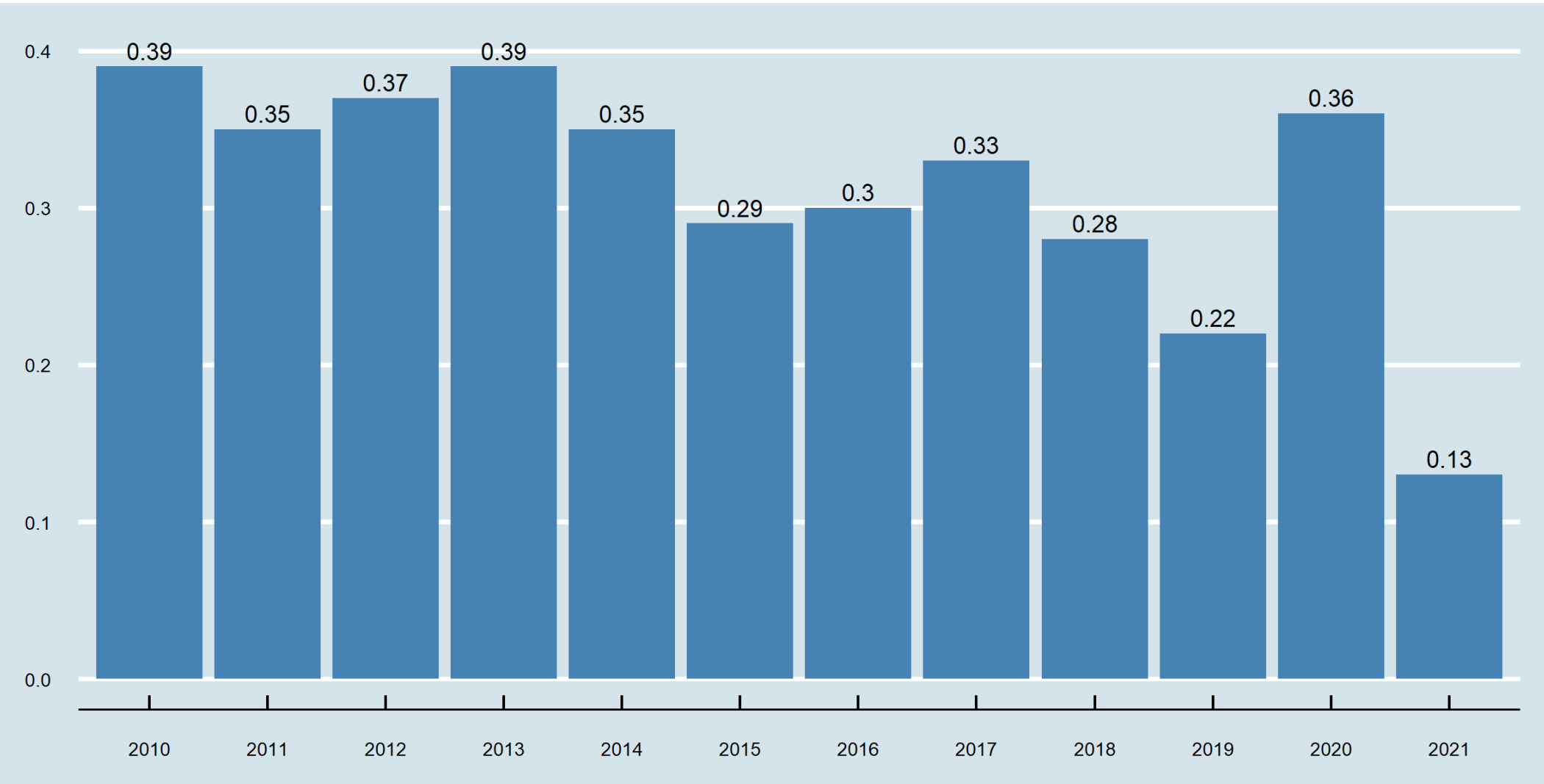
Urban population exposure to air pollution by PM2.5

Correlation between #EU_SDG8i and urban population exposure to air pollution by PM2.5. Years 2010 - 2020



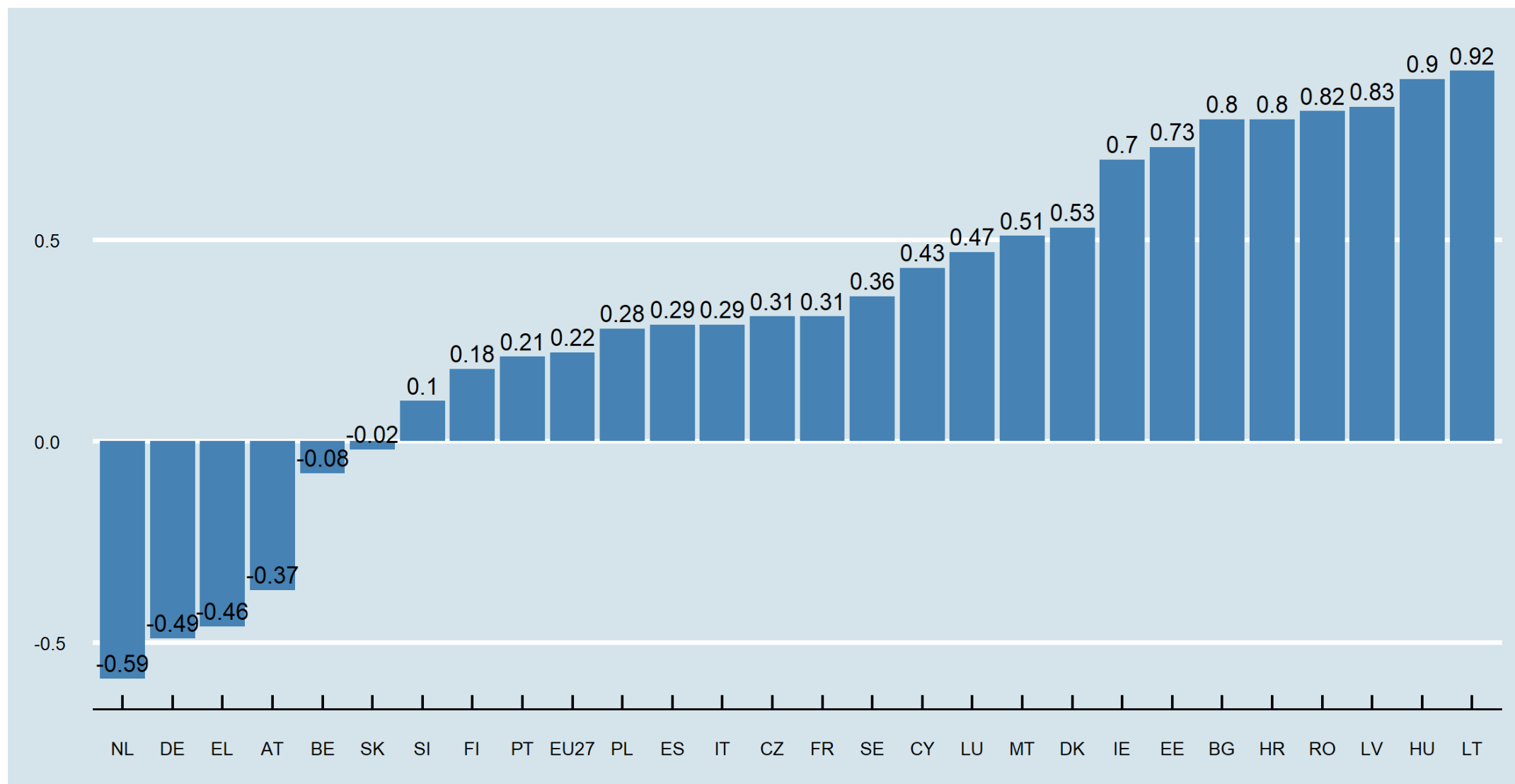
Domestic material consumption per capita

Correlation between #EU_SDG8i and domestic material consumption per capita. Years 2010 - 2021



Domestic material consumption per capita

Correlation between SDG8 and domestic material consumption per capita. Years 2010 - 2021



European
Trade Union
Confederation

Confédération
européenne
des syndicats

Thanks for your attention

gcasale@etuc.org